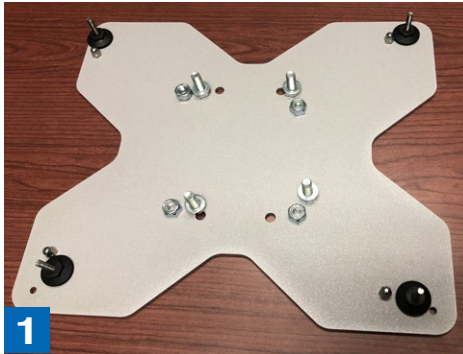


THERMAL ENTRY WIZARD

FLOOR STAND MOUNTING



1

Layout the base plate next to the floor stand.



2

Install the crush washers and washer after nut. As shown in the image.

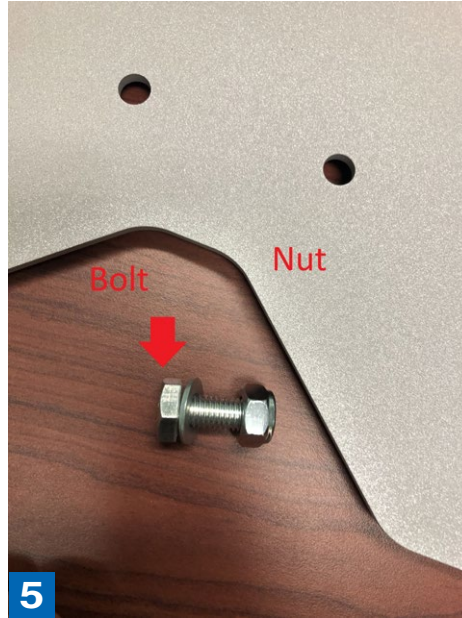


3

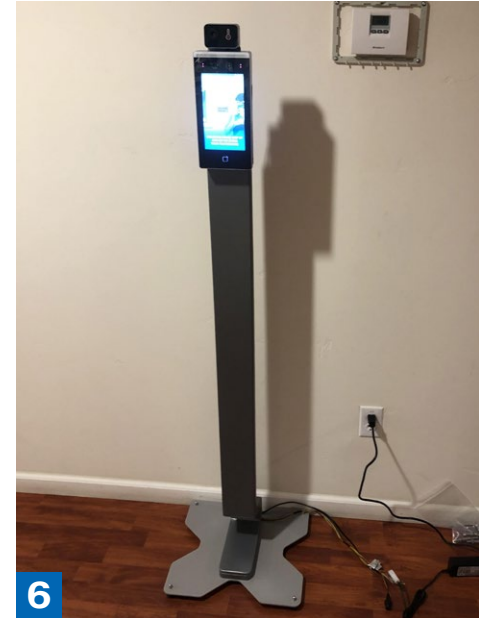
Install the stabilizing pegs on the four corners of the base plate making sure it is leveled.



4 Secure the “acorn” nut turning clockwise while holding the stabilizing peg and rotating it counter clockwise.



5 Repeat the process with the interior nuts and bolts. Align the floor stand over the interior bolts. Secure the base plate to the floor stand.



6 This is how the completed installation should look like.



American Technologies Network Corp.
www.atncorp.com